

**Oil Service Unit**

**FA 008**

Easy filling and cleaning · Compact design · Comfortable handling



Oil Service Unit FA 008

**Description**

**FA 008 – quick, simple and compact**

With the Oil Service Unit FA 008, hydraulic and lubricating systems can be easily filled or cleaned.

**Compact design and comfortable handling**

The compact design allows easy access to the oil tank. The FA 008 comes ready to connect with hose packages. The ultra-fine elements can be quickly changed without special auxiliary tools. The suction hose and the pressure hose can be wound around the hose fixtures.

**Protection of components through ultra-fine filtration**

The EXAPOR®MAX 2 ultra-fine elements are the heart of the ARGO-HYTOS filtering units FA 008. High separation efficiencies guarantee excellent cleanliness levels and thereby highest protection of components. The high dirt holding capacity of the EXAPOR®MAX 2 ultra-fine elements allows economic operation of the FA 008.

**Dirt-holding capacity**

The dirt-holding capacity values in grams from the ISO MTD test dust are in accordance with the ISO 16889 requirements.

**Hydraulic fluids**

Mineral oil and biodegradable fluids (HEES and HETG, see info sheet 00.20).  
Other fluids on request.

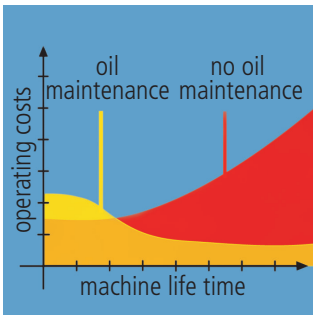
**Viscosity range**

Type	Continuous operation min.	Continuous operation max.	Short-term operation max.
FA 008-11180	15 mm <sup>2</sup> /s 70 SUS	250 mm <sup>2</sup> /s 1175 SUS	400 mm <sup>2</sup> /s 1880 SUS
FA 008-11380	15 mm <sup>2</sup> /s 70 SUS	200 mm <sup>2</sup> /s 940 SUS	400 mm <sup>2</sup> /s 1880 SUS
FA 008-11680	15 mm <sup>2</sup> /s 70 SUS	200 mm <sup>2</sup> /s 940 SUS	400 mm <sup>2</sup> /s 1880 SUS



### Compact design

The compact design allows easy access to the oil tank. FA 008 comes ready to connect, with hose packages.



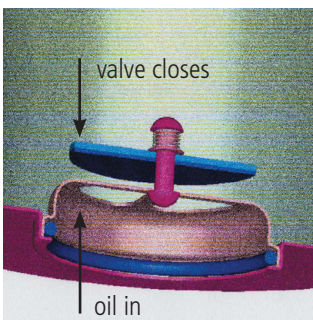
### Economical

The FA 008 Oil Service Unit offers protection that can extend the lifetime of machinery. This protection gives a direct return on investment through extended service intervals and increased machine availability.



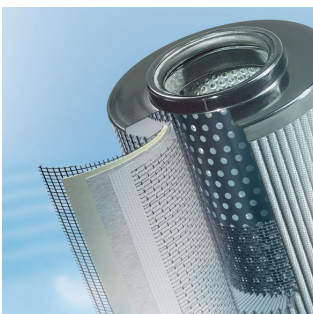
### User-friendly filter element change

The filter element can be removed from the housing together with the cover. The dirt retention valve ensures that solid particle sediment is completely removed with the filter element.



### Maintenance-free filter housing due to a clever filter element technique

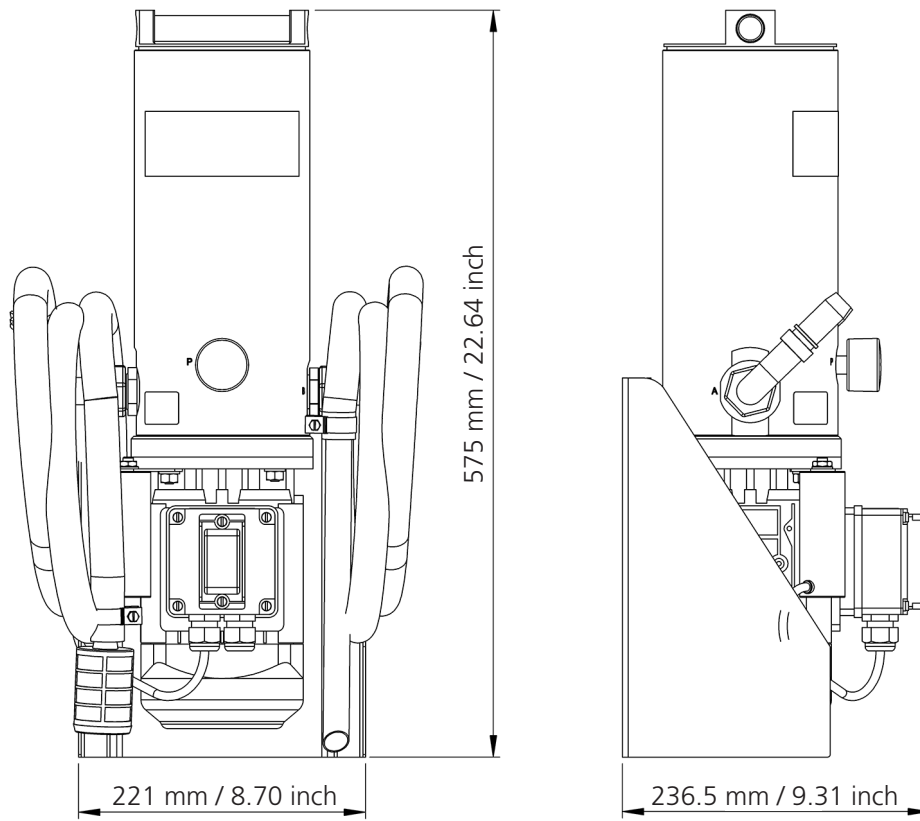
Fluid flows through the element from the inside to the outside. The built-in dirt retention valve closes automatically when the element is removed, ensuring that all dirt is removed from the housing with the element.



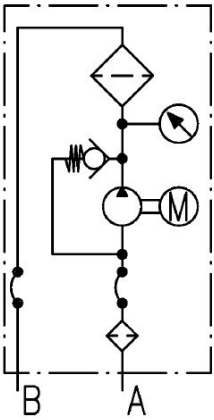
### Quality in detail

The EXAPOR<sup>®</sup>MAX 2 fine element is the heart of the FA 008. High cleanliness levels protect the hydraulic system against contamination during the oil filling process.

## Dimensions



## Hydraulic Symbol



## Selection Chart

Order No.	FA 008-11180	FA 008-11380	FA 008-11680
Nominal flow rate	8 l/min / 2.1 gpm	8 l/min / 2.1 gpm	8 l/min / 2.1 gpm
Filter fineness	3EN2	5EN2	10EX2
Dirt capacity Mi at Q	490 g	460 g	340 g
E-Motor operating voltage	1 ~ 230 V	1 ~ 230 V	1 ~ 230 V
E-Motor operating frequency max.	50 / 60 Hz	50 / 60 Hz	50 / 60 Hz
E-Motor power	0.25 kW (0.3)*	0.25 kW (0.3)*	0.25 kW (0.3)*
Length suction hose	1.8 m / 5.9 ft	1.8 m / 5.9 ft	1.8 m / 5.9 ft
Length pressure hose	2 m / 6.6 ft	2 m / 6.6 ft	2 m / 6.6 ft
Suction height max.	1.5 m / 4.9 ft	1.5 m / 4.9 ft	1.5 m / 4.9 ft
Operating pressure PRV max.	4 bar / 58 psi	4 bar / 58 psi	4 bar / 58 psi
Symbol	1	1	1
Replacement element Order No.	V7.1220-113	V7.1220-13	V7.1220-06
Weight	18 kg / 39.7 lbs	18 kg / 39.7 lbs	18 kg / 39.7 lbs
Clogging indicator	Manometer	Manometer	Manometer
Particle monitor	-	-	-

\* Indications at 50 Hz. At 60 Hz the value increases by approx. 20 %

Other versions on request.

### Filter elements:

See selection chart.

Water-absorbing filter elements EXAPOR®AQUA - on request.

Coarse screen element S7.1220, 100 µm, cleanable and re-usable - on request.

### Accessories:

- › Hose extensions on request.
- › For appropriate clogging indicators see datasheet 60.20.
- › Suction strainer set FA 016.1775 for tank openings on request in case the existing suction strainer cannot be used.
- › Mounting set FA 008.1700 for tank openings with ventilating filter, e.g. as service connection on request.