

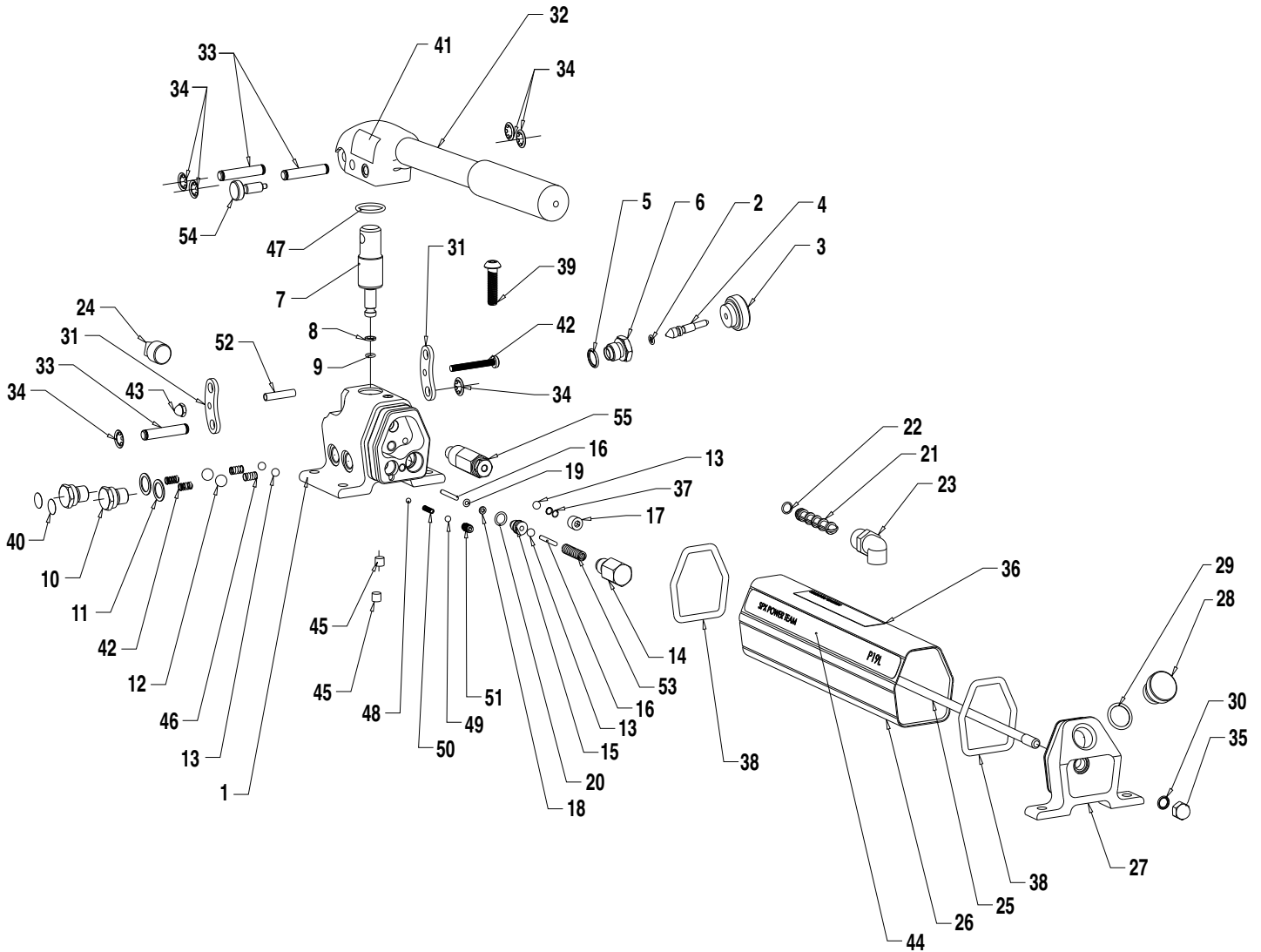
Parts List for:



P19L
 P19L-1320

P19L-1740
 P19L-2000

TWO-STAGE HYDRAULIC HAND PUMP



Parts List, Form No. 1000138, Back sheet 1 of 1

Item No.	Part No.	No. Req'd	Description	Item No.	Part No.	No. Req'd	Description
1	2000360	1	Pump Body	30	*15279	1	O-Ring (-12)
2	*10265	1	O-Ring (-008)				Nitrile 90D .50 x .37
3	2000577	1	Knob	31	2000366	2	Link
4	29783	1	Stem	32	3000169	1	Handle Assembly
5	*10300	1	O-Ring (-906)	33	2000365	3	Pin, Pivot
			Nitrile .62 x .46	34	*2000364	6	Ring, Retaining
6	34871	1	Guide	35	251903	1	Nut, Hex Cap (5/16-18)
7	2000361	1	Piston, 2-Speed	36	1000135	1	Decal, Warning
8	*12184	1	Washer,	37	*10444	3	Spring, (.25 OD x
			Backup .38 x .25				.41 x .02 WS)
9	*12522	1	O-Ring (-10)	38	*10285	2	O-Ring (-329)
			Urethane .37 x .25				Nitrile 70D 2.375 x 2.00
10	2000373	2	Screw, Valve Zinc	39	2000358	1	Screw 5/16-18 BHCS
			Plated (351952)				1.25" Lg
11	*14874	2	Washer, Copper	40	*215907	2	Decal, Warning
			.70 x 50	41	1000143	1	Decal, Locking
12	*10378	2	Ball (3/8" Dia. Steel)	42	2000392	1	Screw (10-32 x 1 5/8")
13	*10375	4	Ball (1/4" Dia. Steel)	43	252871	1	Nut, Acorn (10-32)
14	2000321	1	Housing, Unloading Valve	44	1000139	1	Decal, Tradename
15	*2000322	1	Bushing, Unloading Valve				Power Team
16	*16471	2	Pin, Dowel (.13 x 1.00)	45	15130	2	Fitting, Plug
17	10427	1	Fitting				(1/16 PTF)
18	*214992	1	Washer,	46	14070	2	Spring, Compression
			Backup .24 x .13	47	*205812	1	O-Ring (-118)
19	*10264	1	O-Ring (-006)				Nitrile Buna N
			Nitrile .25 x .12	48	*10419	1	Ball (.156" Dia)
20	*10267	1	O-Ring (-011)	49	*12223	1	Ball (.188" Dia)
			Nitrile .43 x .31	50	*10445	1	Spring
21	*215075	1	Screen, Filter	51	10519	1	Screw, Set
22	*12557	1	O-Ring (-009)				(.250- 20 x .38)
			Nitrile .34 x .21	52	2000402	1	Tubing
23	2000356	1	Elbow 3/8 NPTF	53	*2000330	1	Spring,
24	11127	1	Fitting, Plug				Unloading Valve
			(3/8 NPTF)	54	2000327	1	Plunger, Retractable
25	2000362	1	Rod, Tie 5/16-	55	21278	1	Valve, Relief
			18 UNC x 11.10"				10,000 psi (for P19L)
26	2000353-1	1	Reservoir				Valve, Relief (Adjustable to
			2.275 x 2.55 x 10.25				1,320 psi for P19L-1320)
27	2000363	1	Cap, End				Valve, Relief
28	351245	1	Cap, Filler				1,740 psi (for P19L-1740)
29	*10274	1	O-Ring (-115)				Valve, Relief
			Nitrile .87 x .68				2,000 psi (for P19L-2000)
							Valve Relief
							4,600 psi (P19L-4600)

Part numbers marked with an asterisk (*) are contained in Standard Repair Kit No. 3000179.

Refer to any operating instructions included with the product for detailed information about operation, testing, disassembly, reassembly, and preventive maintenance.

Items found in this parts list have been carefully tested and selected. **Therefore: Use only genuine Power Team replacement parts!**

Additional questions can be directed to our Technical Services Department.