

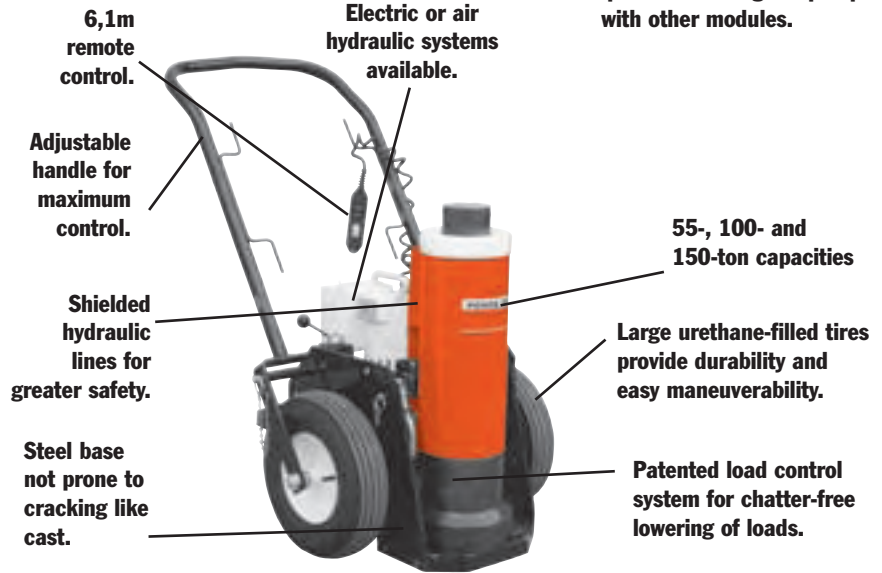
# Portable HIGH TONNAGE

## 55, 100 & 150 Ton

Portable and compact, ideal for locomotive/railcar, mining and heavy equipment maintenance.

# JACKS

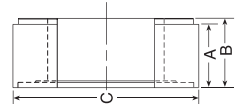
- Modular design - pump and cart separate from cylinder and base.
- Three tonnage capacity options - 55-ton, 100-ton and 150-ton.
- Three collapsed height options – 660, 838 and 1,143 mm.
- Two standard power options - air (PA55) and electric (PE55).
- Two control options - remote motor control and remote valve/motor control.
- Accessory options – 168 mm extension, load-holding rings.
- Select the collapsed height to fit your most frequent application - add jacking modules to suit your needs.
- Remote operation for maximum operator safety and control - choose "motor only" or "motor and valve" control in the hand.
- Easy to maneuver - large tires and small "footprint" make it easy to scoot into the tightest quarters, then locate the exact lifting position.
- Adjustable, heavy-duty handle - makes this jack easy to move, position under vehicles. Can also be used to transport jack on site with a forklift.
- Load-holding rings (optional) - provide full rated mechanical load-holding capability.
- Cylinder extension (optional) - adds more versatility by extending your jack's reach.
- Low-temperature oil (optional) - provides smooth, reliable operation in the coldest climate conditions.
- Modular design - allows you to change lifting modules to suit your tonnage or height requirements. Use the pump module as a portable power station for your other double-acting cylinders (700 bar).
- Exclusive load-control system - provides positive, chatter-free control when lowering the load.
- Shielded and sheltered hydraulic lines - for safer, longer, trouble-free service.



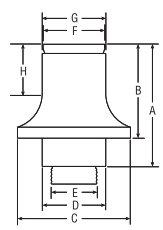
### ORDER INFORMATION CRIBBING BLOCK SETS - INCLUDES ONE JACK MODULE EXTENSION

Order No.‡	55 Ton CBS55		100 Ton CBS100		150 Ton CBS150		200 Ton CBS200	
	1	4	1	4	1	4	1	4
No. in Set	1	4	1	4	1	4	1	4
A	38,1	76,2	38,1	76,2	38,1	76,2	38,1	76,2
B	44,5	82,5	44,5	82,5	44,5	82,5	44,5	82,5
C	139,7	139,7	139,7	139,7	222,2	222,2	254	254
Jack Module Ext.	173		177,8		168,3		168,3	
Total Stack Ht.	515,9		520,7		512,2		512,2	
Product Wt. (kg.)	16,3		30,9		38,6		47,7	

**NEW**



- Convert jack module into stable mechanical cribbing device.
- Increase retracted height up to 521 mm.



### ORDER INFORMATION JACK MODULE EXTENSIONS

(Tons)	No.	A (mm)	B (mm)	C (mm)	D (mm)	E (in.)	F (mm)	G (mm)	H (mm)	Prod. Wt. (kg)
55	<b>58945</b>	223,8	173	127	66,8	1 <sup>11</sup> / <sub>16</sub> -8UN	63,5	66,8	92,2	9,5
100	<b>58943</b>	228,6	177,8	174,7	98,6	2 <sup>3</sup> / <sub>4</sub> -12UN	95,3	98,6	95,3	18,2
150	<b>58944</b>	219,2	168,4	203,2	114,3	3 <sup>1</sup> / <sub>4</sub> -8UNC	111,3	114,3	88,9	22,7

• Increases jack's reach.



### Pump & cart modules

Pump and cart modules contain hydraulic pump, cart, remote control and all hoses and fittings required to connect to a jack module. Contact factory on folding handle cart option.

Remote Control		
Pump	Motor Only	Motor & Valve
Air	PMA55	PMA55S
Electric	Consult Factory	PME55S

### Jack modules

Jack modules easily separate from the pump and cart module.

Tonnage	Cylinder		Collapsed Height (mm)		
	Stroke		660,4	838,2	1.143
55	333	JM25	JM35	JM45	
100	333	JM210	JM310	JM410	
150	460	JM215†	JM315	JM415	
200	333	JM220*	JM320	JM420	

\* collapsed height; 711 mm and stroke 333 mm.

† stroke 333 mm.



Air pump and cart module.



Electric pump and cart module.



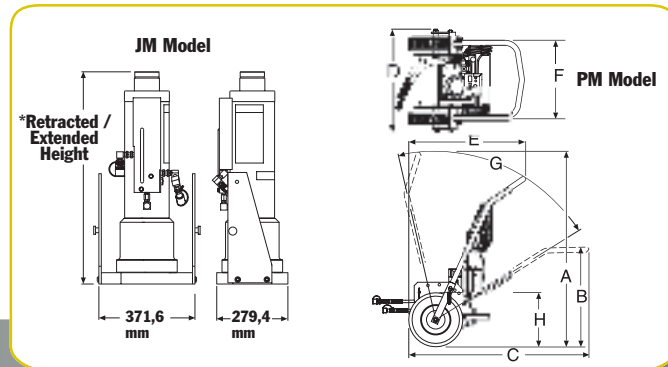
660 mm Jack Module



838 mm Jack Module



1143 mm Jack Module



### Dimensions

Model Series	A	B	C	D	E	F	G	H
<b>PMA &amp; PME</b>	1.464	752	1.353	762	872	594	*70°	406 mm
								Tire Dia.

\* Total range with varying degree increments.

### ORDER INFORMATION – Pump and Cart Modules with Assembled Jack Module

Capacity (tons)	Ret. Height (mm)	Ext. Height (mm)	Stroke (mm)	Pump Type	Power Required	Valve Type	Remote Control	Order No.
55	660,4	994	333	Electric	13/25 amps	Manual	M	<b>JEM5526</b>
100	838,2	1.172	333	Air	1,4 cu m /min at 6 bar	Manual	M	<b>JAM10033</b>
100	838,2	1.172	333	Air	1,4 cu m /min at 6 bar	Air Pilot	M & V	<b>JAR10033</b>
150	660,4	994	333	Electric	25 amps	Manual	M	<b>JEM15026</b>
150	838,2	1.172	333	Air	1,4 cu m /min at 6 bar	Manual	M	<b>JAM15033</b>