

# MAXIMATOR®

## Maximum Pressure.

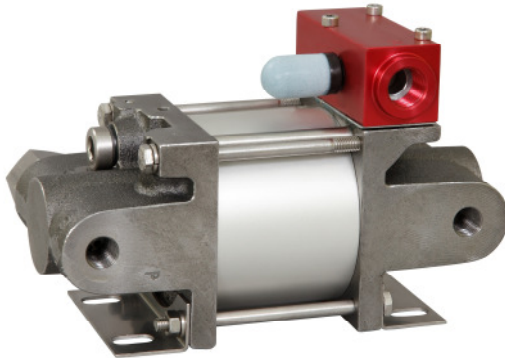


High Pressure Technology • Testing Equipment  
Hydraulics • Pneumatics

### Technical Data Sheet

MO37D

» Oil service



MO37D  
double acting, single air drive head  
(Standard= Side inlet)

#### Technical Data:

Air drive pressure: 1-10 bar / 14,5 - 145psi

Calculated Outlet Pressure at an air drive of 10 bar/145 psi: 460 bar/ 6,671 psi

Pressure ratio: 1:46

Displacement volume/double stroke 5.6 cm<sup>3</sup>/ 0.34 cu.inch

#### Connections:

Inlet: 3/8 BSP

Outlet: 1/4 BSP

Air drive: 3/8 BSP

Maximum operating temperature: 60°C

Net weight: 4.5 kg

Pressure and flow performances, please see enclosed graph.

#### Wetted materials of construction:

Top cap: Aluminium

Air cylinder: Aluminium

Seal package: Polyurethane, NBR

Pump Body: GGG50

Piston: 1.4112 (hardened)

#### Approximate Dimensions:

Height: 228 mm

Depth: 102 mm

Width: 80 mm

#### Available Options:

Special inlet and outlet ports, i.e. NPT MO37D-NPT

Special seal material to handle special fluids on request.

#### Available Accessories:

Air control units with filter pressure regulator, control pressure gauge and shut off valve: MO37D with C1

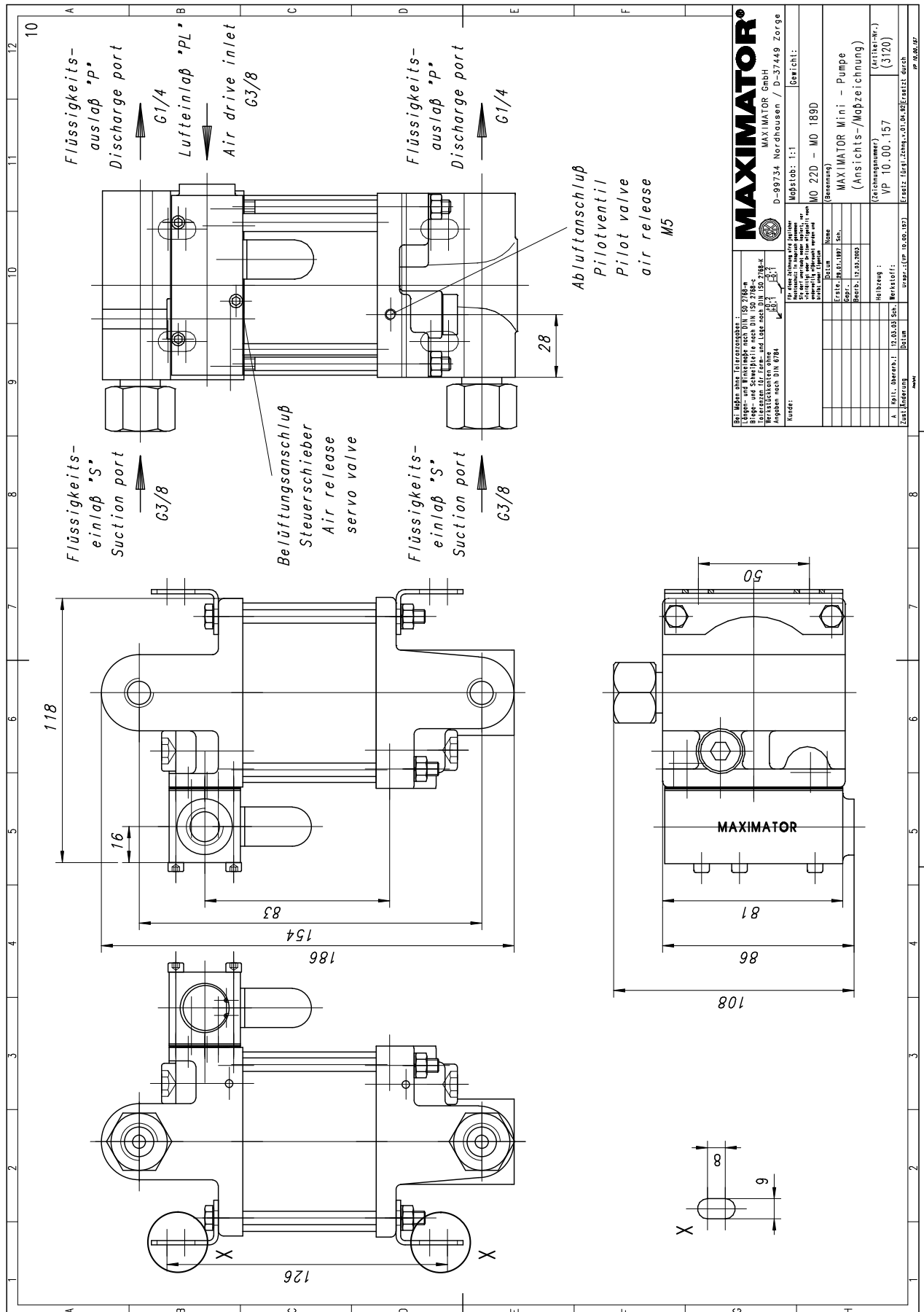
To protect the pump against excessive outlet pressures or to limit the outlet pressure, a safety valve can be fitted to the air control unit in the air drive line: MO37D with C1/SVair (The required outlet pressure has to be indicated.)

**Please consult factory for more information.** All technical and dimensional information subject to change. All General Terms and Conditions of sale, including limitations of our liability, apply to all products and services sold.

# MAXIMATOR®

## Maximum Pressure.

High Pressure Technology • Testing Equipment  
Hydraulics • Pneumatics



### Leistungsdiagramm/Performance Graph M(O) 37 D

Prüfflüssigkeit/Test Liquid: Wasser-Öl-Emulsion/Water Oil Emulsion ca. 1 - 10 cst

