

# MAXIMATOR®

## Maximum Pressure.

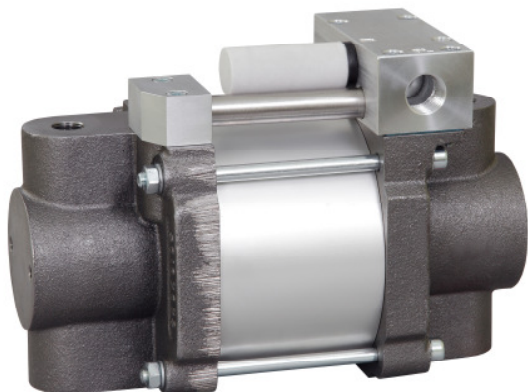


High Pressure Technology • Testing Equipment  
Hydraulics • Pneumatics

### Technical Data Sheet

S60D

» Oil service



S60D  
double acting, single air drive head

#### Technical Data:

Air drive pressure:	1-10 bar / 14,5 - 145psi
Calculated Outlet Pressure at an air drive of 10 bar/145 psi:	600 bar/ 8,700 psi
Pressure ratio:	1:60
Displacement volume/double stroke	16 cm <sup>3</sup> / 0.98 cu.inch

#### Connections:

Inlet:	1/2 BSP
Outlet:	3/8 BSP
Air drive:	1/2 BSP
Maximum operating temperature:	60°C
Net weight:	14.5 kg

Pressure and flow performances, please see enclosed graph.

#### Wetted materials of construction:

Top cap:	Aluminium
Air cylinder:	Aluminium
Seal package:	Polyurethane, NBR
Pump Body:	GGG50
HP Piston:	1.4112 (hardened)

#### Approximate Dimensions:

Height:	260 mm
Depth:	135 mm
Width:	175.5 mm

#### Available Options:

Special inlet and outlet ports, i.e. NPT	S60D-NPT
Special seal material to handle special fluids on request.	

#### Available Accessories:

Air control units with filter pressure regulator, control pressure gauge and shut off valve:	S60D with C1.5
To protect the pump against excessive outlet pressures or to limit the outlet pressure, a safety valve can be fitted to the air control unit in the air drive line:	S60D with C1.5/SVair (The required outlet pressure has to be indicated.)

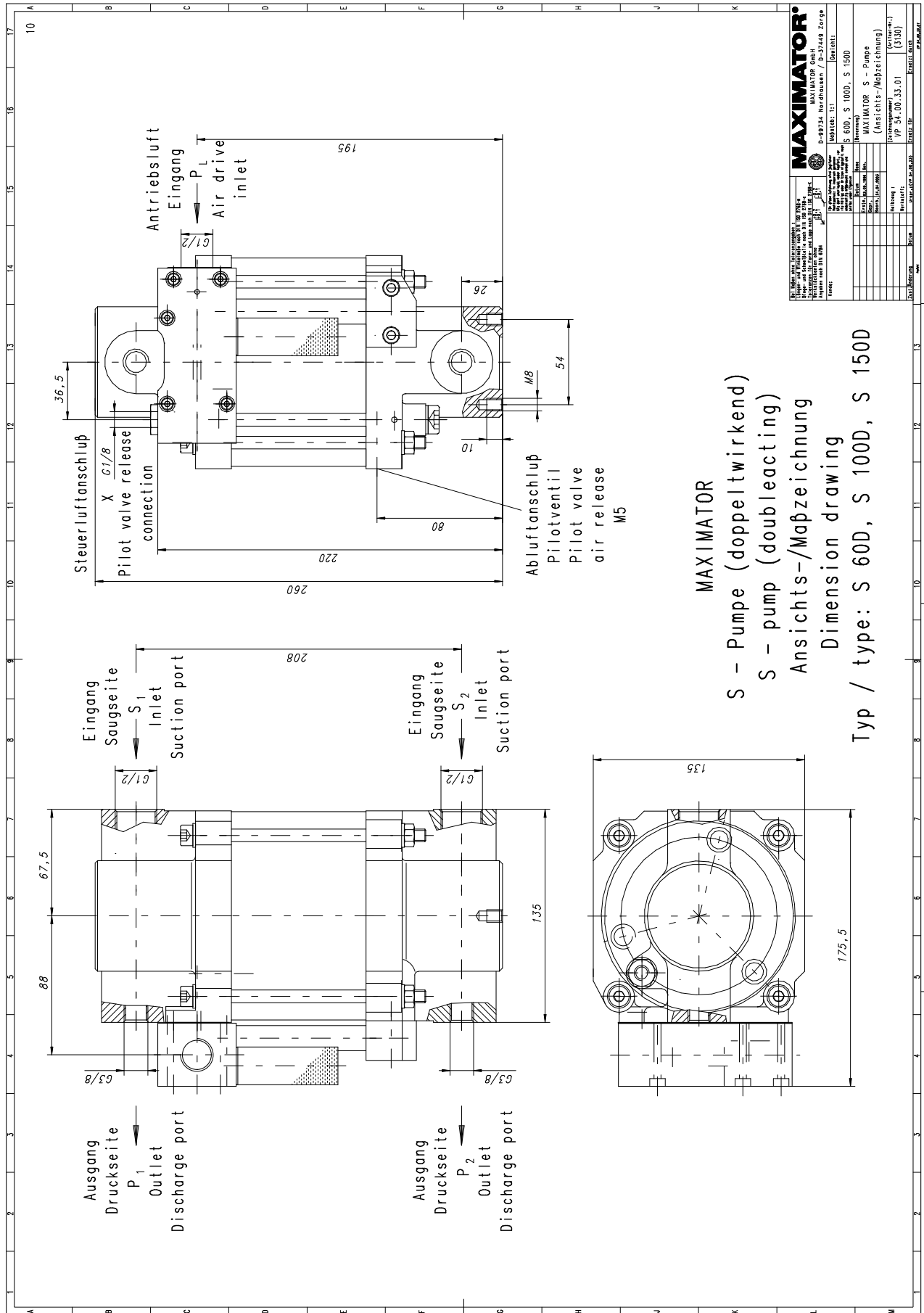
**Please consult factory for more information.** All technical and dimensional information subject to change. All General Terms and Conditions of sale, including limitations of our liability, apply to all products and services sold.

# MAXIMATOR®

## Maximum Pressure.

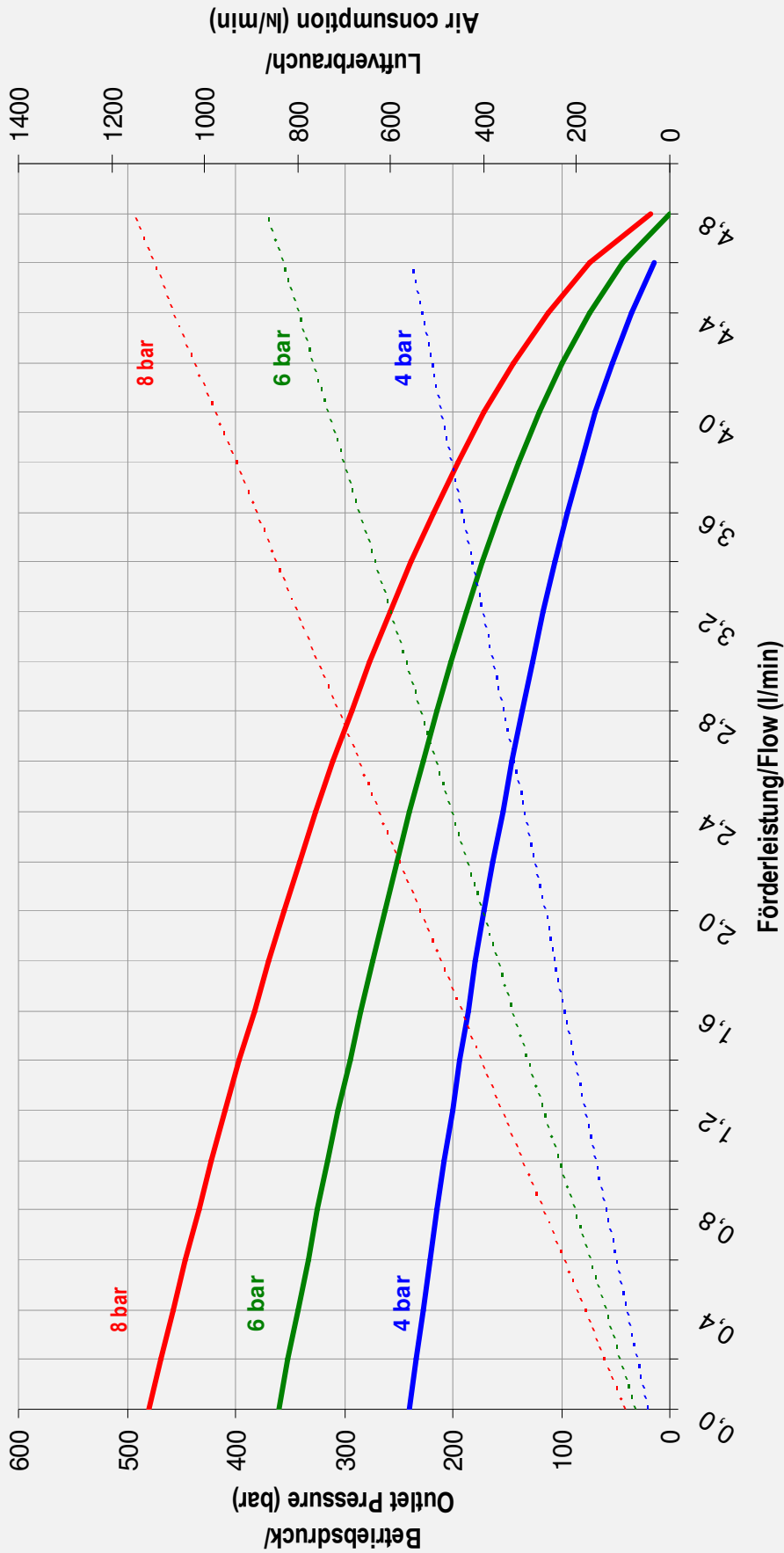


High Pressure Technology • Testing Equipment  
Hydraulics • Pneumatics



### Leistungsdiagramm/Performance Graph S 60 D

Prüfflüssigkeit/Test Liquid: Wasser-Öl-Emulsion/Water Oil Emulsion ca. 1 - 10 cst



- Betriebsdruck bei/Outlet Pressure at 4 bar
- Betriebsdruck bei/Outlet Pressure at 8 bar
- Betriebsdruck bei/Outlet Pressure at 6 bar
- - - Luftverbrauch bei/Air consumption at 4 bar
- - - Luftverbrauch bei/Air consumption at 8 bar
- - - Luftverbrauch bei/Air consumption at 6 bar