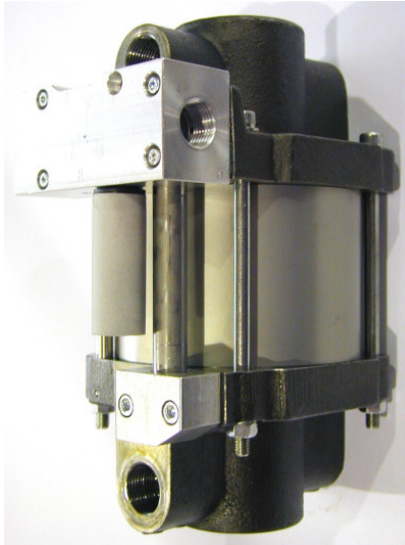


Technical Data Sheet	<b>S250D</b>	Oil service
----------------------	--------------	-------------



**S250D**

double acting, single air drive head

**Technical Data:**

Air drive pressure:	1-10 bar / 14,5—145 psi
Calculated Outlet Pressure at an air drive of 10 bar/145 psi	1,650 bar/ 24,255 psi
Pressure ratio:	1:250
Displacement volume/double stroke	4,0 cm <sup>3</sup> / 0.24 cu.inch
<b>Connections</b>	
Inlet: (only side inlet available)	3/8 BSP
Outlet:	1/4 BSP
Air drive	1/2 BSP
Maximum operating temperature	60 °C
Net weight	14.5 kg

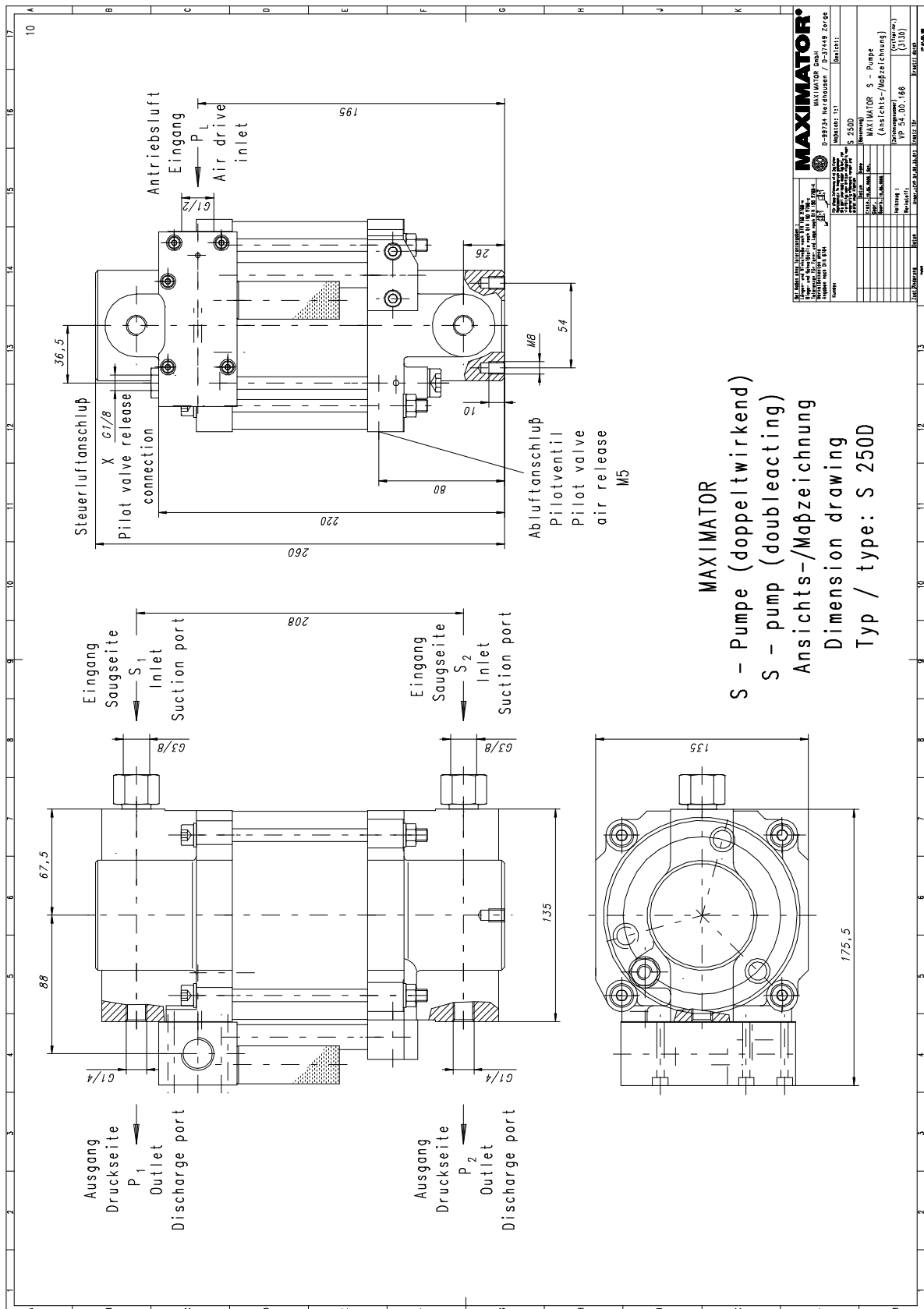
Pressure and flow performances, please see enclosed graph.

<b>Material of construction:</b>	Top cap	Aluminium
	Air cylinder	Aluminium
	seal package:	Polyurethane, Buna N
	Pump Body:	GGG50
	HP Piston	1.4112 (hardened)
<b>Approximate Dimensions:</b>	Height:	260 mm
	Depth:	135 mm
	Width:	175.5 mm
	Special inlet and outlet ports, i.e. NPT	S250D-NPT
	Special seal material to handle special fluids on request.	
<b>Available Accessories</b>		
Air control units for S series with filter pressure regulator, control pressure gauge and shut off valve:	S250D with C1.5	
To protect the pump against excessive outlet pressures or to limit the outlet pressure, a safety valve can be fitted to the air control unit in the air drive line:	S250D with C1.5/SVair (The required outlet pressure has to be indicated.)	

**Please consult factory for more information.**

All technical and dimensional information subject to change. All General Terms and Conditions of sale, including limitations of our liability, apply to all products and services sold.

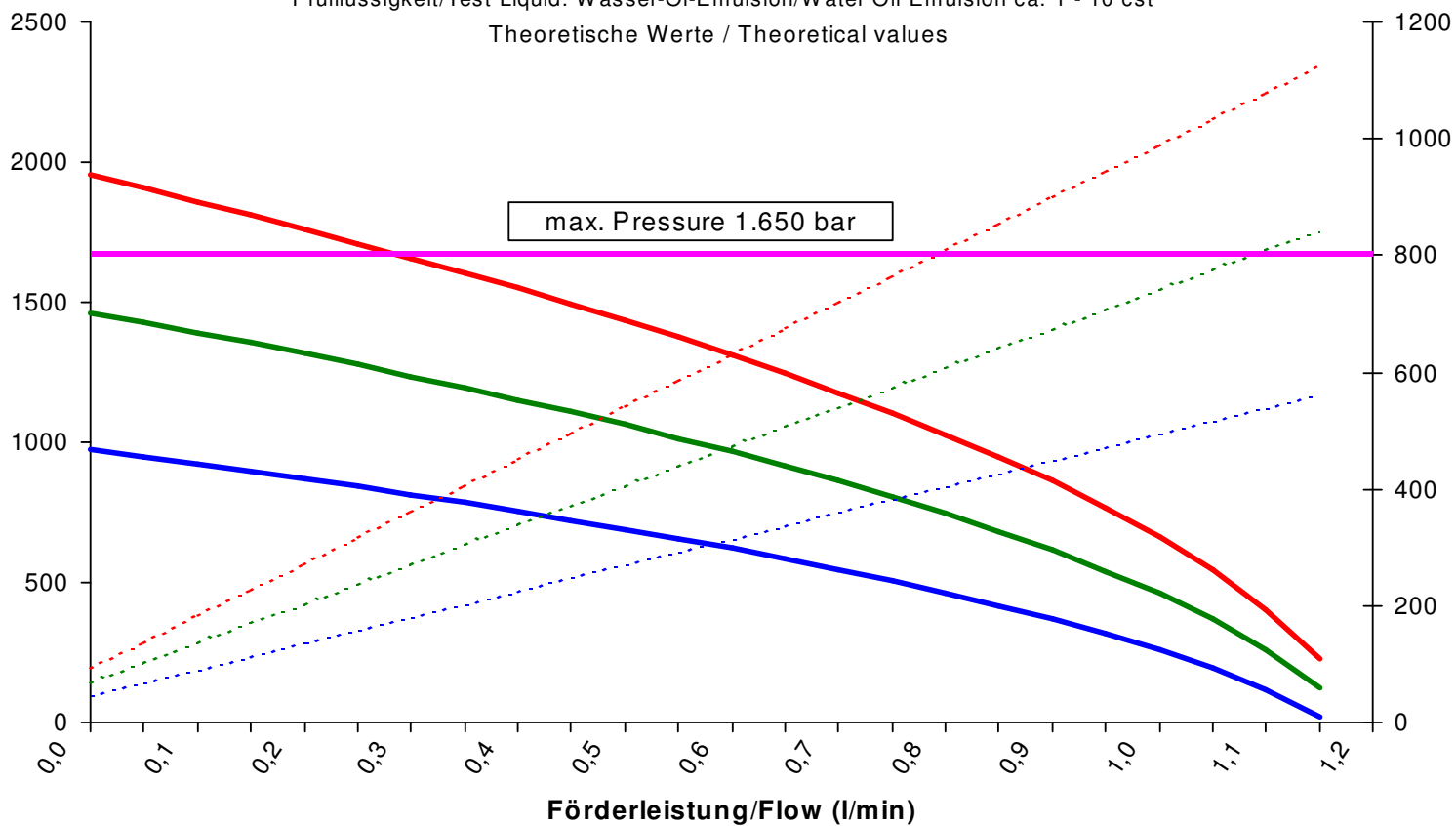
Standard pump comes with BSP ports, only side inlet available.



<b>MAXIMATOR®</b>	
MAXIMATOR S - Pumpe (Anschalts-/Maßzeichnung)	
Typ: S 250D, 166	
Maßstab: 1:1	
Zeichnungs-Nr.: 250D	
D-89734 Walkenrieder Str. 15	
D-37449 Zorge	
Tel: +49(0)5586 803-0	
Fax: +49(0)5586 803-40	
E-Mail: info@Maximator.de	
www.Maximator.de	
© 2006	

## Leistungsdiagramm/Performance Graph S 250 D

Prüfflüssigkeit/Test Liquid: Wasser-Öl-Emulsion/Water Oil Emulsion ca. 1 - 10 cst  
Theoretische Werte / Theoretical values



- Betriebsdruck bei/Outlet Pressure at 4 bar
- Betriebsdruck bei/Outlet Pressure at 8 bar
- Betriebsdruck bei/Outlet Pressure at 6 bar
- - - Luftverbrauch bei/Air consumption at 4 bar
- - - Luftverbrauch bei/Air consumption at 8 bar
- - - Luftverbrauch bei/Air consumption at 6 bar